

Service hatches

Service hatches for outdoor gas and water supply. Many variations for every situation.



3500.06.00

ABS plastic housing

colour: white

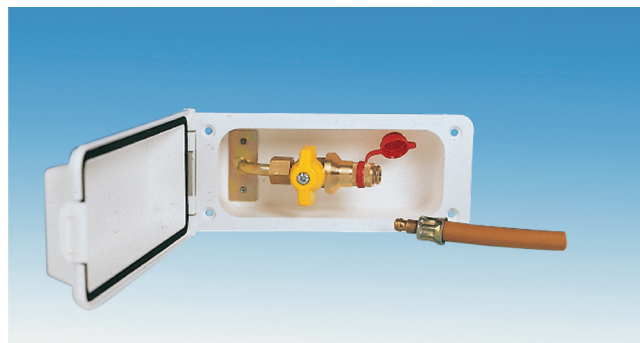
sealed against water spray

H x L x D: 85 x 195 x 70 mm

installation depth varies according to the version

standardised body-work cut-out: 155 x 65 mm

radius 18 mm



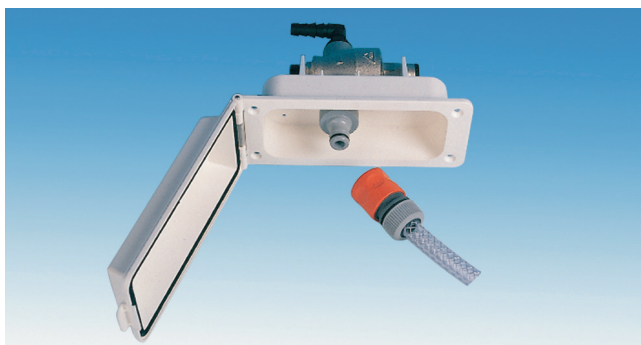
3500.06.06

Service hatch for gas

caravan-service hatch for connecting gas appliances in the open air

GAS: ball-cock as shut-off valve with safety connector

Gas installation only from authorised specialist!

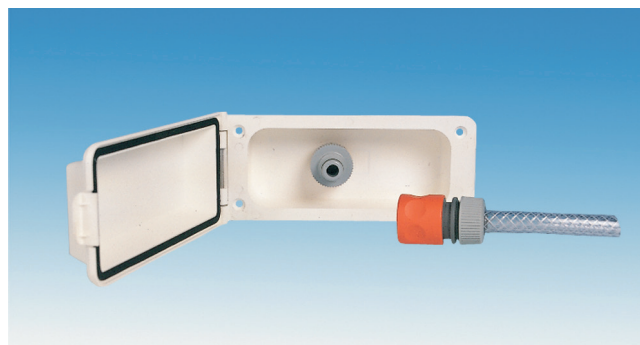


3500.06.10

Service hatch for water inlet

caravan service hatch for connecting the caravan or camper to the public water mains

Suitable for drinking water!



3500.06.02

Service hatch for water outlet

for connecting showers in the open air

WATER: GARDENA socket connector and loose GARDENA plug

Service hatches



3500.06.19

Service hatch for water inlet

service hatch to bring water from an external tank to your caravan using a submersible pump

WATER: socket connector with with plug for hose Ø 8 mm

ELECTRIC: socket to connect an external submersible pump (pump needs plug 3933.01.00)



1430.12.17

Immersion pump VIP-PLUS

to connect to service hatch 3500.06.19; pump with 1,5 m cable and plug 3933.01.00, 1,5 m hose

3500.06.17

Service hatch for water inlet with immersion pump VIP-PLUS

service hatch to bring water from an external tank to your caravan using a submersible pump

WATER: socket connector with plug for hose diam. 8 mm

ELECTRIC: socket to connect an external submersible pump

PUMP: VIP-PLUS;

1,5 m cable with plug

3933.01.00; 1,5 m hose



3012.06.00

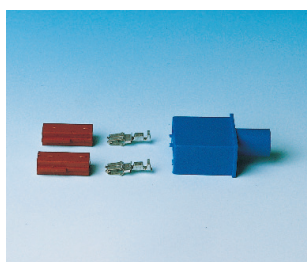
External shower connection

installation hole: Ø 58 mm
depth: 55 mm
hose Ø 10 mm



3932.05.00

Adapter for external shower connection



3933.01.00

Plug for water inlet



3011.06.00

Water inlet

installation hole: Ø 58 mm
depth: 55 mm
hose Ø 10 mm



3011.06.17

Water supply set

consists of: water inlet, submersible pump LUX-PLUS with 1,5 m cable and hose, bucket with screw cap and open cap with tank insert